

CREATING IMPACT

YOUR FOUNDATION, EMPOWERING CHANGE



A FULL CIRCLE
OF IMPACT

page 12

THE ANNUAL APPEAL

page 14

A LEGACY THAT LASTS

page 18

ANNUAL
REPORT 2024


MOORINGS PARK[®]
FOUNDATION

Table of Contents

Philanthropy	2	Coming Together for a Cause	16
Opening of C&J Cafe.....	4	A Legacy That Lasts	18
By the Numbers	5	Cornerstone Society.....	19
Partner Support	6	Orchid Society	20
Resident Support	8	2024 Financials	22
Community Support	10	Ways to Give	24
A Full Circle of Impact.....	12	2024 Donors.....	25
Senior Peak Challenge	14		

Foundation Board



Front Row (L to R): John Rakoske • Dan Lavender, CEO & President • Dave Rutstein, Board Chair • John Risk
 Back Row (L to R): Guy Wiebking • Gail Webster-Patterson • Richard Vitkus • Eileen Connolly-Keesler
 Karen Schneider • Bob Rankin, Vice Chair

Our Mission

Promote a culture of philanthropy to enhance successful aging through support for Moorings Park residents, employees, and the greater community.

A Letter from Dave and Jennifer

Dear Friends of Moorings Park,

As we reflect on the past year, we are proud to report that 2024 was a year of meaningful progress and generous impact — thanks to you.

Because of your support, Moorings Park Foundation raised more than \$4.1 million (a new record!), fueling programs and partnerships that enhance the lives of partners, residents, and support for seniors across Southwest Florida. This remarkable achievement speaks not only to the strength of our mission, but also to the spirit of community that defines Moorings Park.



Your Foundation continued to serve as a catalyst for positive change. From expanding services and amenities across our campuses to investing in local organizations that share our vision for successful aging, your generosity helps those seniors who need it most.

We are proud of the role we play in fostering a culture of philanthropy, deepening connections between donors and the causes they care about, and amplifying the reach of charitable investment throughout our community.

As we look ahead, we do so with confidence. The challenges are real — but so is the power of a unified community committed to service, innovation, and compassionate care.

On behalf of the Moorings Park Foundation Board of Directors and staff, thank you. Your dedication and support ensure Moorings Park continues to thrive — not only as a premier retirement community, but as a force for good in the lives of so many.

With deepest gratitude,

Dave Rutstein

Dave Rutstein
 Board Chair
 Moorings Park Foundation, Inc.

Jennifer F. Clark

Jennifer F. Clark
 Executive Director
 Moorings Park Foundation, Inc.

Philanthropy: A Kaleidoscope of Possibilities



At its heart, philanthropy is like a kaleidoscope — a beautiful convergence of individuals, ideas, and resources coming together to create something extraordinary. Just as the patterns within a kaleidoscope are formed by countless unique pieces, our community's impact is shaped by the contributions of many, each playing a vital role in the bigger picture.

With every act of generosity, we turn the lens, creating new patterns of hope, opportunity, and transformation. Each contribution — whether

time, talent, or treasure — adds its vibrant color, helping us build a world where challenges become opportunities and dreams take shape.

In philanthropy, as in a kaleidoscope, beauty lies in diversity and the infinite possibilities born from unity. Together, we create ever-changing visions of what's possible, reminding us that even small actions can create ripples of profound change.

Join us in turning the lens once more, shaping a brighter future for all.



Moorings Park Foundation Staff

In April of 2025, Moorings Park Foundation welcomed Jennifer Clark as the Executive Director. Jennifer, previously the Associate Executive Director at Grande Lake, joined Georgia North, Foundation Administrator, and Paula Zuluaga, Foundation Development Specialist.



Opening of C&J Café:

Heartfelt Thanks to the Rakoskes



Top image, L to R: Jessica Short • Boris Ardisoni • John Rakoske
Connie Rakoske • Dan Lavender

In the fall of 2024, the newly renovated C&J Café officially opened its doors — a warm, full-service space designed for connection, conversation, and community.

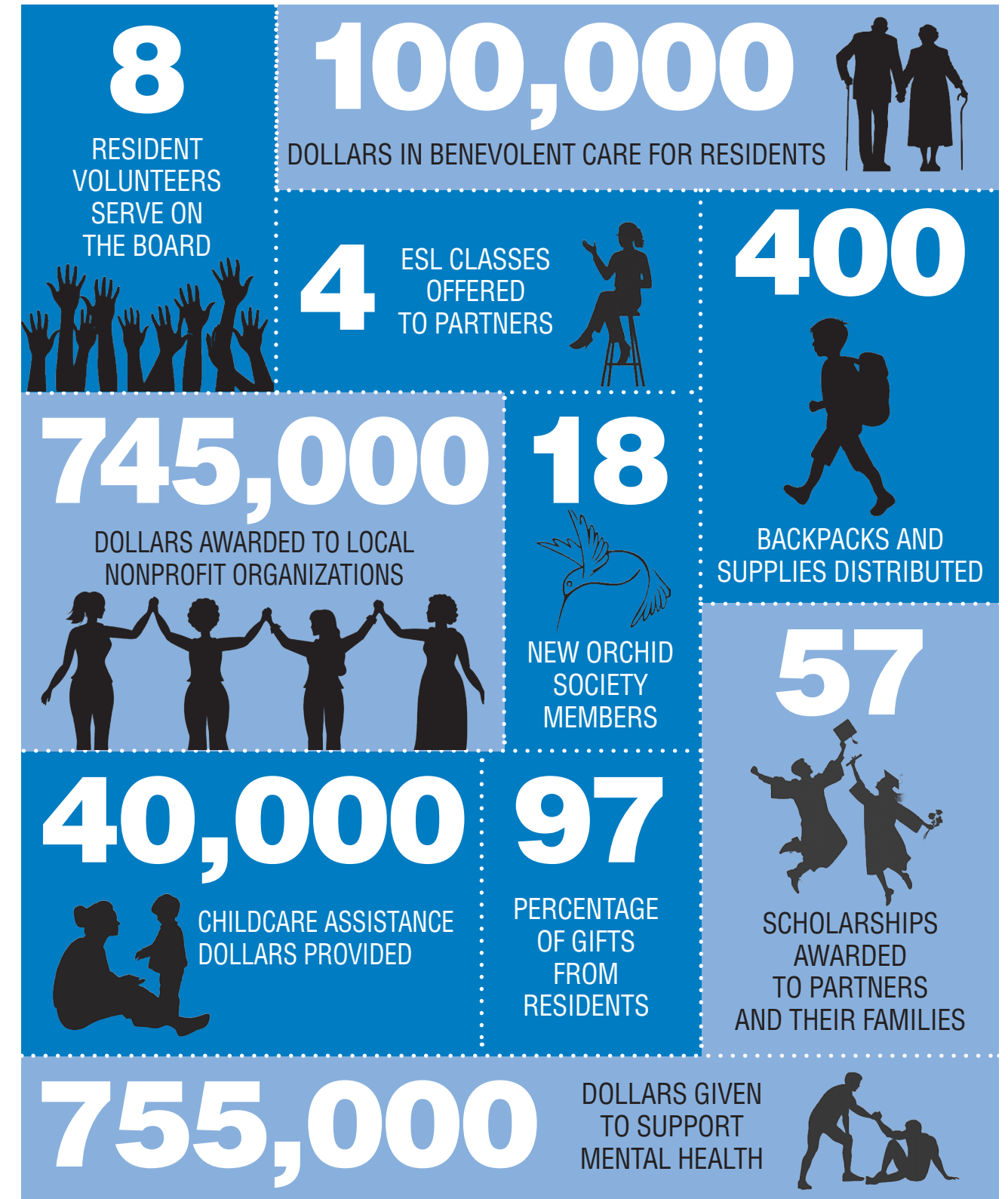
Made possible through the generosity of John and Connie Rakoske, the café now offers residents a beautifully reimagined gathering spot that reflects their shared vision: to create spaces that bring people together.

Thanks to the Rakoskes' continued support, the Center for Healthy Living now has a place as vibrant and welcoming as the people who fill it.



Fast Facts:

Moorings Park by the Numbers



Partner Support:

Supporting Those Who Support Us

At Moorings Park, our residents hold our partners in the highest esteem — and for good reason. Every day, our partners go above and beyond to ensure the comfort, care, and satisfaction of those they serve. Their unwavering dedication and thoughtful service consistently exceed expectations, making a meaningful difference in the lives of our residents. It's this extraordinary commitment that transforms Moorings Park into more than just a place to live — it makes it truly feel like home.

Home Starts Here: Supporting Employees on the Path to Ownership



Homeownership is more than just having a place to live — it's a foundation for stability, financial security, and personal pride. For many, owning a home represents a major milestone and a path to building long-term wealth. It creates stronger ties to the community,

improves overall well-being, and provides a sense of permanence that renting often cannot.

Rosana Gonzalez, a dedicated housekeeper at Moorings Park for over six years, is the second employee to receive financial assistance from the Foundation toward the down payment and closing costs on a Habitat for Humanity home.

Thanks to the generosity of our supporters, the Foundation was able to help Rosana turn her dream of homeownership into a reality. When we invest in our partners, we nurture a culture of mutual respect, dignity, and shared purpose — values that are at the heart of everything we do.

Opening Doors to Education: The Partner and Dependent Scholarship Program

At Moorings Park Foundation, we believe education has the power to transform lives — not just for individuals, but for families and future generations. That's why we're proud to offer the Partner and Dependent Scholarship Program, a meaningful initiative that provides scholarship assistance to our employees and their dependents.

Through this program, partners and their families can pursue degrees, certifications, or training programs that open doors to new opportunities and personal growth. Whether it's a partner advancing their career in healthcare or a child taking their first steps toward college, these scholarships help lighten the financial burden and make the dream of higher education more accessible.

Meet Megan



L to R: Nicole Roth • Glen Gronlund • Megan Roth
Andrea Roth

Megan Roth, a freshman at Florida State University, is the daughter of Andrea Roth, who has served as an Executive Assistant for the past three years at Moorings Park.

"The Moorings Park Foundation Scholarship means that I can attend school with added security. I can focus on furthering my career in biology with the financial support of this scholarship, instead of having to worry about working extra hours to afford it"

• Megan Roth



Meet Erick

Erick Tovar is a server at the Grande Lake campus in the clubhouse restaurant, Savor Twenty-Six. He is currently majoring in Entrepreneurship with a minor in Marketing at Florida Gulf Coast University.



L to R: Sue McNaghten • Rob McNaghten
Mary Carlone (Erick's mother) • Erick Tovar
Kayda Johnson

"After receiving this scholarship, I was finally able to focus more on my studies. Working became a choice, not a necessity. I am so grateful for this scholarship, it has helped me make a dream into a reality as I plan to graduate in the fall of 2026."

• Erick Tovar

Because of the kindness of our supporters, we're not just funding education — we're investing in



potential. Together, we're helping build brighter futures for the families who are the heart of our Moorings Park Communities.



L to R: Joy Neubert
Fernando Conde
Bonnie Gaffney

Packing Backpacks, Filling Hearts

In July 2024, Moorings Park Foundation set out to ensure that our partners' children started the school year with the tools they need to succeed. Through our Pack the Backpack events, residents came together to collect, organize, and distribute backpacks filled with essential school supplies.

It was more than just pencils and notebooks — it was a message to these students that they are seen, supported, and valued. For families who may be struggling, receiving a fully stocked backpack can ease a financial burden and help a child feel prepared, confident, and excited for the school year ahead.

Together, we packed over 400 backpacks — each one a symbol of hope, encouragement, and opportunity. This initiative reflects the heart of Moorings Park: people coming together to lift others up, in this instance, one backpack at a time.

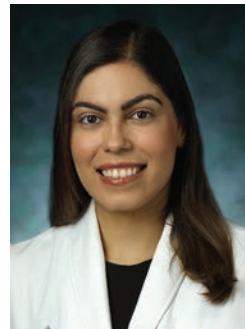
Resident Support:

Investing in Well-being, Innovation, and Peace of Mind

At Moorings Park Foundation, our mission is rooted in supporting the health, dignity, and quality of life of every resident. Through generous donor contributions, the Foundation provides vital support for residents in three key areas: benevolent care, special programming, and campus enhancements.

Benevolent Care

Thanks to our Benevolent Care Fund, no resident of Moorings Park has ever been asked to leave due to unforeseen financial hardship. This quiet but powerful promise brings peace of mind and security to every resident, reinforcing our community's deep commitment to compassion and dignity for all.



Dr. Sohemi Pagan

Johns Hopkins Fellows Program

Because of the kindness from residents John & Connie Rakoske, the Foundation has been able to bring some of the nation's most promising geriatric medicine fellows to Moorings Park. These talented physicians work directly with our teams, helping to elevate clinical excellence while

gaining hands-on experience. Residents benefit from fresh perspectives and world-class medical insight — all made possible through philanthropic support.

“Connie and I are pleased to help continue this mutually beneficial relationship with the prestigious Johns Hopkins University School of Medicine.”

• John and Connie Rakoske

Transformative Power

Moorings Park Grande Lake is enhancing its commitment to excellence in senior living with the development of a state-of-the-art Assisted Living and Memory Support facility named Garden View, alongside a beautifully designed botanical garden due to open in the fall of 2025.

The Assisted Living & Memory Support facility will offer some of the largest and most technologically advanced residences in the country, reflecting years of healthcare expertise and forward-thinking design. Complementing the new healthcare facility, the botanical garden will offer residents a serene environment to relax and rejuvenate. Designed with lush landscaping and tranquil pathways, the garden serves as a peaceful retreat, enhancing the overall well-being of residents and providing a natural space for reflection.



L to R: Nico Zepp • Gina Paris • Neil Higgins • Larry McPherson • Ross Dickman • Katy Kurili • Dan Lavender • Clark Hill • Alan Horton • Tom Mann • Peter Tuffo • Jon DeHondt



Capital gifts help transform organizations by achieving goals that would otherwise take years. Moorings Park donors have the flexibility to designate their gifts according to their passion and intent while leaving a lasting legacy for future residents. If a resident wishes to support a campus enhancement, those funds can be restricted specifically for that purpose. We honor those wishes by ensuring their contribution is used exactly as directed.

The pièce de résistance of the new building, thoughtfully named the Palmetto Sunroom by Lucy and Jack Kuhne, will be located on the third floor with floor-to-ceiling views of the gardens. This inviting space will offer Assisted Living residents a warm and welcoming environment to gather, relax, and take in the beautiful surroundings — all from the comfort of indoors.

As residents stroll through the six themed gardens, their journey will begin at the Pathway to the Celestial Garden, setting the tone for a peaceful and reflective experience. Along the way, they will encounter the

whimsical Fluffington Garden, a heartfelt gift from Willy and Jack, the donors' beloved pups; the serene Garden Outlook, made possible through the generosity of Kathy and Bill Avery; and the tranquil sounds of the Peace Fountain, a lovely contribution from Joanne Wyss.

Adding to the natural beauty of the space, a vibrant living plant wall, generously donated by Gene and Anne Culler, will bring texture, color, and life to the environment — an enduring symbol of growth and renewal.

Together, these thoughtful features reflect our residents' enduring dedication to those who call Moorings Park home. With the support of generous donors, we are building a stronger, more caring, and more innovative community for generations to come.

Community Support:

2024 Community and Educational Grants Program

Moorings Park Foundation is proud to support programs that extend our mission beyond our campuses and into the broader community. Through our Community and Educational Grants Program—guided by a dedicated committee of resident volunteers—we help fund local nonprofits who serve seniors, including the underprivileged, and those facing serious illness or end-of-life care.

In July 2024, we awarded \$745,000 to 30 impactful organizations: \$545,000 for senior-focused initiatives and \$200,000 for education programs preparing future healthcare and service professionals.

These grants reflect the compassion and leadership of our residents and their commitment to creating a healthier, more hopeful community for all.



Grants Committee (L to R): Sue Reynen • Bob Rankin
Karen Schneider • Jim Perman (not pictured: Mitch Sill)

Community Grant Recipients

20 organizations supporting seniors and underserved populations

Total Awarded: \$545,000

- Alzheimer's Association Florida Gulf Coast Chapter – \$6,000**
Collier County Health Fair Awareness Initiative to increase awareness of services through community health fair participation
- Amber's Antibodies – \$10,000**
Individual Grant Program provides financial assistance to cancer patients aged 60+ facing the burden of treatment costs
- AVOW Hospice – \$35,000**
Palliative Care Services for Mature Adults offers holistic support that fosters peace of mind and reduced anxiety
- Baker Senior Center – \$50,000**
Supports the expansion of the Brain Joggers Early Memory Loss Group
- Beverly's Angels – \$40,000**
Provides new home "bundles" for homeless seniors transitioning into housing
- Cancer Alliance of Naples – \$25,000**
Senior Financial Assistance program supports older cancer patients with essential living expenses

- Collier Resource Center – \$30,000**
Expansion of the Senior Outreach Plan providing information, referrals, and case management
- Collier Senior Center Golden Gate – \$65,000**
Provides mental health counseling via the UPSLIDE Program and direct aid to low-income seniors
- David Lawrence Mental Health Center – \$25,000**
Funds behavioral healthcare treatment for uninsured or underinsured seniors
- Florida Lions Eye Clinic – \$25,000**
Provides free comprehensive eye care for seniors lacking access to vision services
- Home Base Florida – \$20,000**
Veteran and Family Care Program empowers veterans to manage stress and access mental health services
- Immokalee Fair Housing Alliance – \$30,000**
Supports safe, affordable housing development for low-income seniors
- Lighthouse of Collier – \$14,000**
Funds training for visually impaired seniors to live independently and safely

- Naples Take a Soldier Fishing – \$10,000**
Provides a weekend of appreciation for senior veterans
- Parkinson's Association of Southwest Florida – \$10,000**
Expands access to the Speech Therapy Program for seniors with Parkinson's
- Premier Mobile Health Services – \$30,000**
Delivers healthcare to medically vulnerable seniors at risk for hospitalization
- St. Matthew's House – \$20,000**
Supports individuals facing hunger, homelessness, and addiction through comprehensive services

- SWFL Regional Coalition to End Homelessness – \$60,000**
Seniors of Firm Footing Program offers rapid rehousing and outreach for seniors facing homelessness
- Valerie's House – \$15,000**
Grandparents Raising Grandchildren Program provides grief support groups to families experiencing loss
- Warrior Homes of Collier – \$25,000**
Senior Veteran Support Services delivers housing and support to homeless senior veterans

Educational Grant Recipients

10 organizations supporting students and workforce development

Total Awarded: \$200,000

- Champions for Learning – \$10,000**
College and Career Preparation Program supports high school students in need
- Florida Gulf Coast University – \$30,000**
Scholarships for health professions students in Nursing, PA Studies, PT, OT, Exercise Science, and Athletic Training
- Florida SouthWestern State College – \$20,000**
Scholarships for students pursuing Nursing and Paramedics
- Grace Place – \$30,000**
LEAD (Leaders Empowered to Achieve Dreams) Program supports college and career access for Golden Gate High School students
- Guadalupe Center – \$30,000**
Provides Tutor Corps College Scholarships for underprivileged Immokalee youth
- Immokalee Foundation – \$15,000**
Healthcare Summer Camp offers hands-on learning in health professions to 35 students
- Immokalee Technical College – \$15,000**
Student Emergency and Gap Program provides support for learning and living expenses
- Lorenzo Walker Technical College – \$25,000**
Scholarships for students in health sciences
- New Horizons of SWFL – \$15,000**
After-school education program supports underserved youth pursuing careers in OT, social work, and rehab counseling
- Project Explore – \$10,000**
Workforce Readiness Program provides career exploration for adults with disabilities at Moorings Park Communities

A Full Circle of Impact:

A Family Connection to Moorings Park

Project Explore, based at Moorings Park, offers transformative on-the-job training and personalized instruction, empowering students to build confidence and independence as they transition into the workforce. Our dedicated employees volunteer as mentors, guiding students as they shadow and assist with daily responsibilities. Their hands-on experience is paired with classroom instruction led by Anne Fredette and Bridgette Parliament, both instructors with Collier County Public Schools.

For 25 years, Anne has been a pillar of support for students with disabilities, helping them develop career skills and prepare for independent employment. Her unwavering commitment has enriched the lives of students, their families, and the Moorings Park communities.

A Family Connection to Moorings Park

Anne's connection to Moorings Park extends into her personal life, where her values of education and service have shaped her sons, Nicholas and Michael.

From Scholarship Recipients to Future Workforce

Michael Fredette, a recipient of the Moorings Park Foundation Scholarship for four consecutive years, recently graduated from the University of South Florida with a Bachelor of Science in Biomedical Sciences and a minor in Nutrition.

Although Michael excelled both in the classroom and on the football field at Naples High School, he found his freshman year of college more challenging than expected. Determined to succeed, he sought tutoring sessions at USF's Academic Success Center. Inspired by the impact tutoring had on his own academic growth, he decided to pay it forward, becoming a tutor himself. Overcoming obstacles helped him develop effective methods to simplify complex subjects for others.

Michael also founded Pre-Health Study Pathways, a student-led organization that has now grown to over 300 members, supporting STEM students with resources, study techniques, and career guidance. Now a medical student at the Alabama College of Medicine, Michael is following his dream of becoming a surgeon.

"I aim to contribute meaningfully to the field of medicine and become a physician who not only excels professionally but also fosters inspiration and positive impact among colleagues and patients."

• Michael Fredette



More Than a Teacher — A True Champion

Anne's dedication goes far beyond the classroom. As a mentor and advocate, she celebrates each student's progress and provides guidance through challenges. Her legacy is visible in the many students who have gone on to secure meaningful jobs — some even becoming valued members of the Moorings Park team. Through her

work, Anne has inspired a culture of inclusion and empowerment that continues to ripple through our community.

"I'm truly grateful for the support that Moorings Park provides for the Project Explore Program. Our students' success reflects the belief and dedication given by the Moorings Park mentors. Together we are changing lives. As a mom, I have always strived to instill strong morals, values, and work ethic to help them grow into successful young men. I am incredibly blessed to have both of my sons and am deeply grateful for the Moorings Park Foundation, which has played a vital role in helping my children pursue their dreams for the future."

• Anne Fredette



Nicholas Fredette, Anne's youngest son, is currently attending the University of Florida and was recently accepted into the prestigious M.E. Rinker, Sr. School of Construction Management, a nationally recognized leader in construction education and research within UF's College of Design, Construction, and Planning. In the summer of 2025, Nicholas will begin an internship with DeAngelis Diamond, a nationally award-winning construction management firm based in Naples, Florida. He has been a recipient of a Foundation scholarship for the past two years and will continue his educational journey with the Foundation's support for the 2025–2026 academic year.



Both brothers have deep ties to Moorings Park, participating in activities and volunteering from a young age. Their connection reflects the values of service, education, and perseverance instilled by their mother.

A Legacy of Impact and Inspiration

Through her dedication to Project Explore, Anne Fredette has touched countless lives, empowering students to build meaningful futures. Her influence extends beyond academics. She instills confidence, perseverance, and a sense of community.

As her children continue their academic and professional journeys, Anne's family's connection to Moorings Park mirrors her values and dedication. Her impact will undoubtedly inspire generations to come.

"Moorings Park has always felt like a part of my extended family – supportive and present throughout my life. The Foundation Scholarship is not only helping me pursue my education at the University of Florida, but is also shaping the path to my future, and for that I am forever grateful!"

• Nicholas Fredette

Senior Peak Challenge:

Reaching New Heights for Senior Well-Being

The Senior Peak Challenge is our annual initiative that, as the name suggests, inspires Moorings Park residents to rise to the occasion and come together to reach new heights — supporting programs, partnerships, and services that reflect our mission.

In 2024, the Moorings Park Foundation Board of Directors challenged residents to respond to a growing concern — the mental health crisis in Collier County, particularly among seniors. The need for timely, compassionate behavioral healthcare continues to escalate.

To address this urgent issue, the board pledged to match every donation dollar-for-dollar, up to \$375,000, with the goal of making a \$750,000 total gift to the David Lawrence Centers (DLC).

Thanks to the generosity of many, we met the challenge.

These funds will help establish a 15-bed geriatric wing at the new Collier County Behavioral Health Center. The Moorings Park Foundation Wing will offer seniors in crisis access to 24-hour walk-in care, real-time behavioral health assessments, and intervention from experienced professionals — all under one roof. This new facility will be a testament to the power of collective philanthropy. Together, we are ensuring our elderly neighbors receive the care, dignity, and support they deserve.

Thank you to those who rose to the challenge.



Polly Keller, an original campus resident and the visionary founder of what is now known as the David Lawrence Centers for Behavioral Health (DLC), was a pioneering force in advancing mental health advocacy in Collier County. Recognizing a critical gap in services during a time when mental health needs were often overlooked, Polly championed the creation of the county's first community mental health clinic in 1968. Her tireless efforts brought together local and state resources, established vital partnerships, and laid the foundation for what would become a lifeline for thousands of individuals and families.

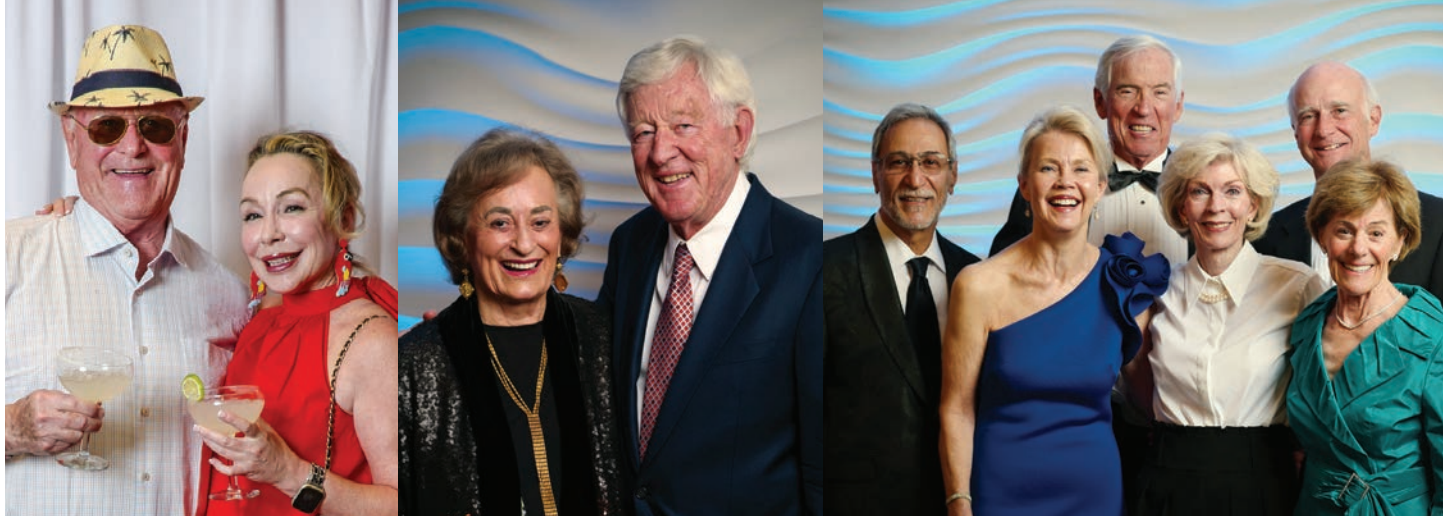
Front Row: Polly Keller
 Back Row (L to R): Alan Horton • Mary Morton • Scott Burgess • Dan Lavender

Coming Together for a Cause: Celebrating Community, Connection, and Impact

Our fundraising galas are more than elegant evenings — they are moments of connection, celebration, and shared purpose. These gatherings bring our community together in powerful ways, building awareness and inspiring action in support of the Foundation’s mission.

Thanks to the remarkable generosity of our residents, the 2024 galas raised over \$550,000 across the Moorings Park Communities. These achievements are a testament to the powerful bonds we’ve built with our supporters.

Every event strengthens the fabric of our community and reaffirms what we can accomplish together. Thank you for standing with us — your support continues to make a profound difference.



A Legacy That Lasts: Honoring the Generosity of Planned Giving Donors

At Moorings Park Foundation, we are continually inspired by the extraordinary individuals who choose to leave a legacy for long-lasting impact. Planned giving donors are visionaries who look beyond the present and invest in the future.

There are many creative ways to make a planned gift that aligns with your personal goals. For residents of Life Plan Communities like Moorings Park, one meaningful option is to designate the refundable portion of your entrance fee — typically returned to your estate upon passing — as a gift to the Moorings Park Foundation.

Grande Lake residents Peter and Anne Spears are among these generous individuals. By donating the refundable portion of their entrance fees, they made powerful statements: that the community where they lived, built friendships, and received exceptional care, is a worthwhile investment. Leaving a legacy through the Foundation ensures that impact lives on — for our residents, partners, and the greater community. Their planned gift will generate support in perpetuity helping Moorings Park Foundation to thrive long after their lifetimes. The principal remains intact, while only the investment income is used — providing a sustainable, long-term source of funding for our mission.

Peter and Anne’s legacy will make an impact year after year, supporting future generations with enduring strength and stability. We are deeply grateful for their vision, generosity, and forward-thinking spirit.

“Becoming a resident of Moorings Park has given us the opportunity to join a community of accomplished individuals from diverse backgrounds — people who genuinely care about the well-being of fellow residents, employees, and the greater Naples community. By supporting the Foundation’s vision to establish an endowment fund, we help ensure that its mission can be sustained, both today and in the future.”

• Peter and Anne Spears



CORNERSTONE SOCIETY

A tree represents lasting impact and growth. Like deep roots, planned giving donors’ generosity provides a strong foundation for the future. The trunk symbolizes stability, while the branches and leaves reflect how their legacy reaches out to touch lives for generations. Just as a tree endures and flourishes through time, so too does the lasting influence of a planned gift.

New 2024 members are in bold.

Marcelo and Betty Alvarez
Paula Bannister
John and Fran Beamer
Michael Benigno
Jodi Bertholdt
Dolly Bodick-Korest
Steve and Helen Brinkert
Clare Carragan

Henry and Caryl Cohen
Jerry Coomes
Al and Helen Febbo
Glen and Shirley Gronlund
Jack and Marcia Hall
Alan Horton
Jim and Liz Jessee
Kayda and David Johnson
Gary and Helen Kaenzig
Linda Leatherbury

Dudley and Vee Lyons
Jim Mines
Laurie Morss
Douglas and Baerbel Munson
Sandy Parker and Elliot Feinberg
David and Rena Rutstein
Ron and Patti Salvagio
Karl and Alice Sheffield
Peter and Anne Spears
Joanne Wyss



ORCHID SOCIETY

Just as hummingbirds pollinate flowers and support ecosystems, philanthropy nurtures communities, providing resources and care that help people and organizations thrive. The Orchid Society recognizes donors who have given or pledged to give \$50,000 or more to the Foundation.



2024 Financials

Restricted vs. Unrestricted Giving

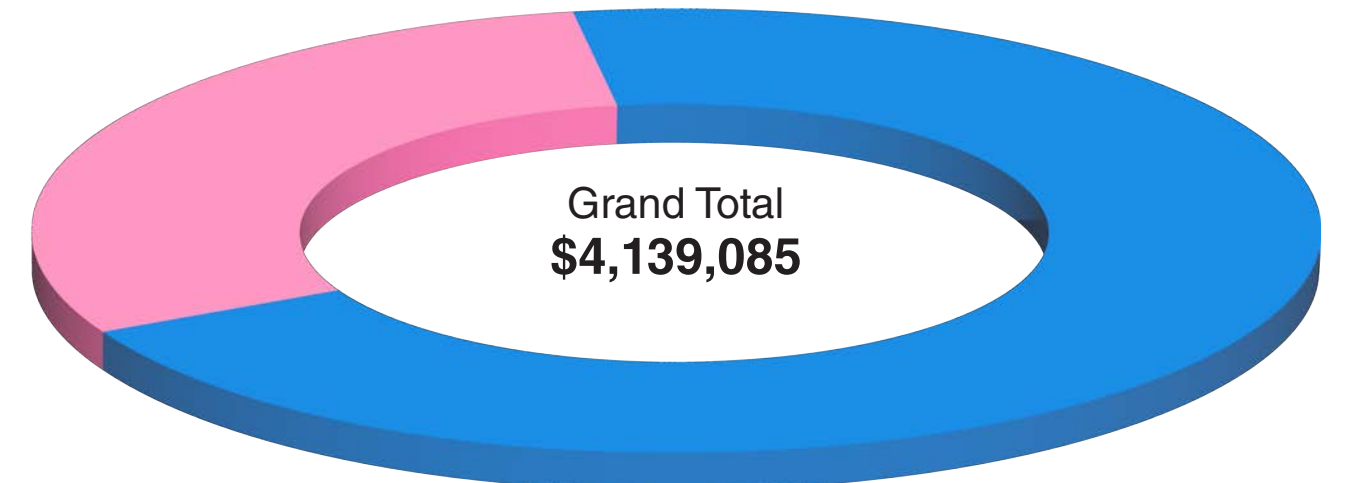
At Moorings Park Foundation, we are committed to honoring the intent behind every gift.

Restricted gifts allow you to direct your support to a specific purpose or program that aligns with your personal values — such as partner scholarships, community grants, affordable housing, or capital projects. These gifts make a focused and lasting impact on the areas that matter most to you.

Unrestricted gifts, on the other hand, provide the Foundation with the flexibility to respond to the community's most pressing and evolving needs. They empower us to meet challenges, seize opportunities, and support innovation across all areas of our mission.

Both types of giving are vital. Whether you choose to support a specific program or provide broad-based support, your generosity sustains the continued excellence and compassionate care that defines Moorings Park.

2024 Contributions to Moorings Park Foundation:



■ **Unrestricted Contributions - \$1,226,640 (30%)**

■ **Restricted Contributions - \$2,912,445 (70%)**

Restricted Funds:

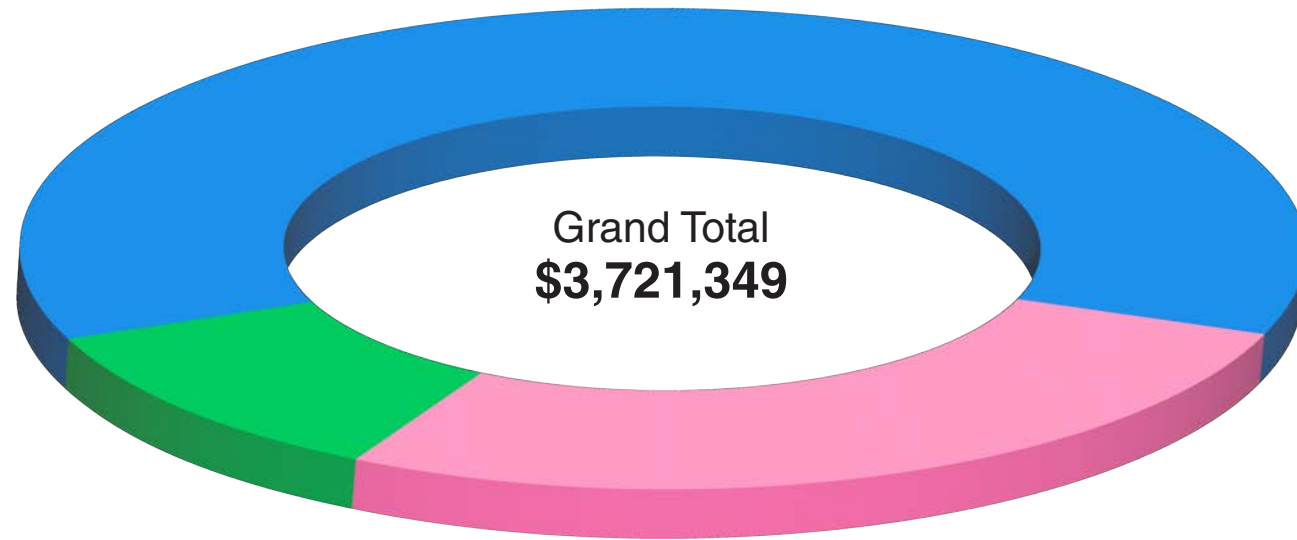
- Affordable Community Housing
- Capital Projects
- Community and Educational Grants
- Community Grants
- Educational Grants
- Friends of Art
- Friends of Bower Chapel
- Friends of the Orchid House

- Friends of the Woodshop
- Greatest Need (unrestricted)
- Hurricane Relief (when applicable)
- Partner Resource Center
- Partner Housing
- Partner Scholarships
- Partner Support
- Resident Support

2024 Impact Made by Moorings Park Foundation

Our charitable giving is about more than support — it's about connection, compassion, and community.

In 2024, our philanthropic efforts approached an impressive \$4 million — a new record!.



Partner Support \$428,195 (11%)

Childcare Assistance	\$40,030
Scholarships	\$271,635
Partner Resource Center.....	\$61,873
Habitat for Humanity.....	\$20,000

Other Support

ESL Classes & Back to School Supplies.....	\$34,657
---	----------

Community Support \$2,291,938 (62%)

Educational Grants.....	\$200,000
Community Grants.....	\$505,000
Workforce Housing	\$831,178
David Lawrence	\$755,760

Resident Support \$1,001,216 (27%)

Resident Financial Support	\$103,668
Capital Projects & Programming	\$897,548

Operating Expenses
\$371,664 (9% of 2024 income)

Ways to Give



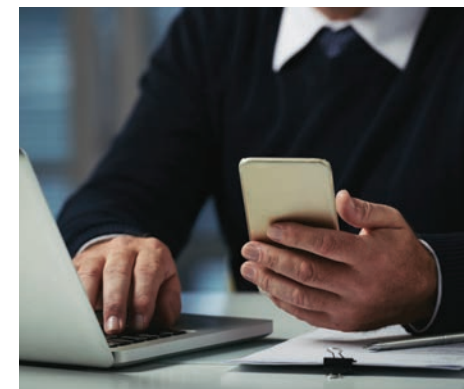
Credit Card



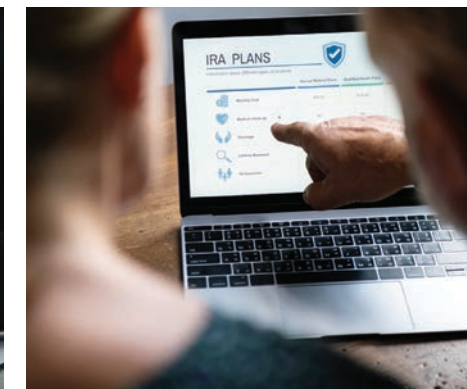
Cash or Check



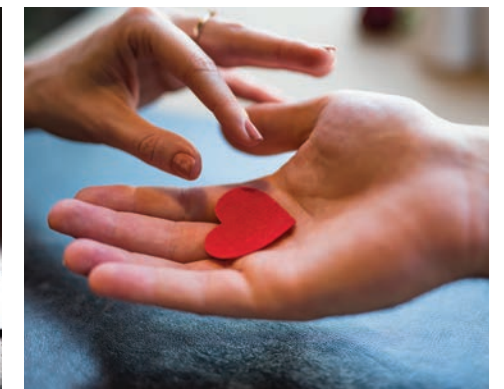
Stock or Securities



Wire Transfer



Qualified Charitable Distributions



Donor Advised Fund



Planned Gifts

Use your cell phone camera to scan this code to make a one-time gift or monthly recurring donation.





YOUR Community, YOUR Foundation

Moorings Park Foundation
120 Moorings Park Drive
Naples, Florida 34105
Foundation.MooringsPark.org

